

3 Rosella Drive  
Abbey Heights  
Newcastle Upon Tyne  
NE15 9GU

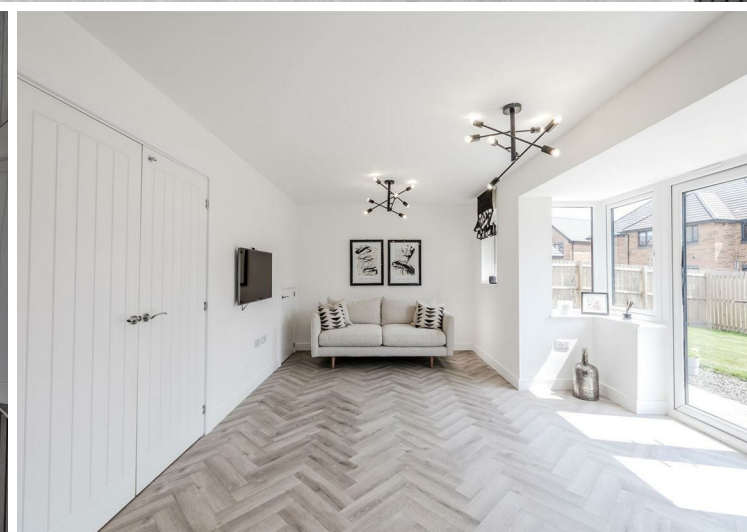
Price  
£330,000



3 Rosella Drive  
Abbey Heights  
Newcastle Upon Tyne  
NE15 9GU

- Three Bedroom Detached House
- Great Open Plan Kitchen Diner
- En-Suite to Bedroom 1
- Driveway and Garage
- Sealed Unit Double Glazed Windows
- Immaculately Presented
- Downstairs W/C
- Jack & Jill Bathroom to Bedroom 2
- Gas Central Heating
- Council Tax Band D | EPC B

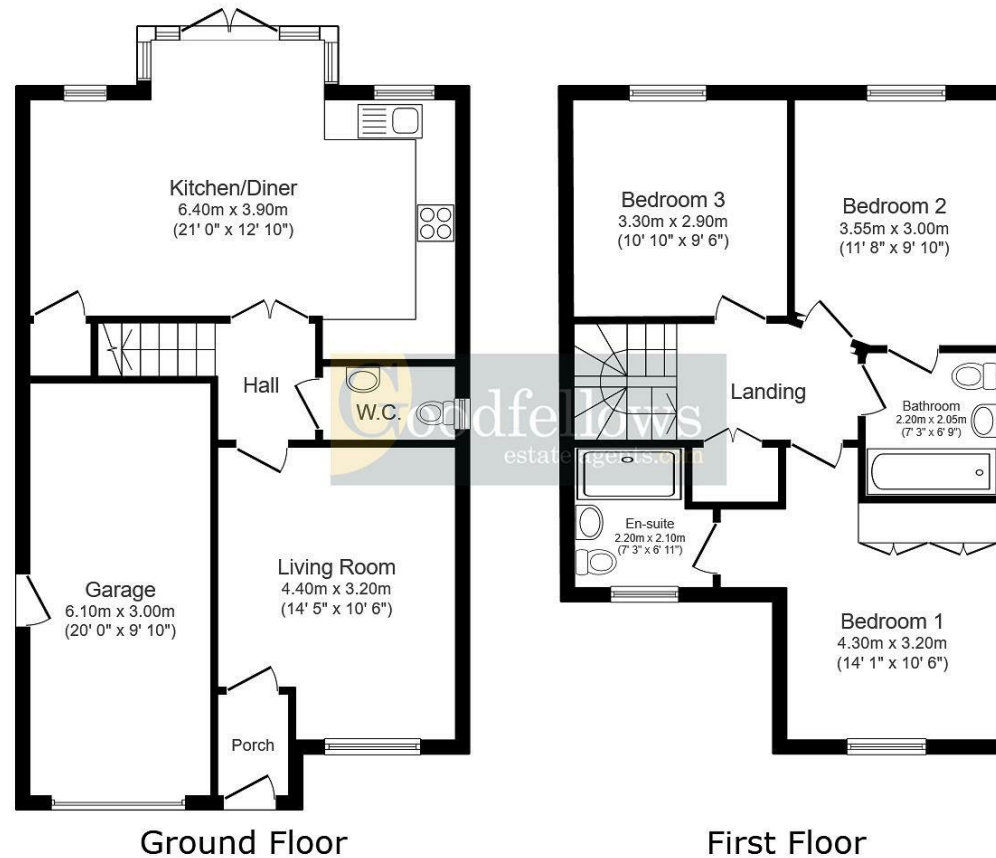






3 Rosella Drive, Abbey Heights, Newcastle Upon Tyne, NE15 9GU





Total floor area: 128.2 sq.m. (1,379 sq.ft.)

This floor plan is for illustrative purposes only. It is not drawn to scale. Any measurements, floor areas (including any total floor area), openings and orientations are approximate. No details are guaranteed, they cannot be relied upon for any purpose and do not form any part of any agreement. No liability is taken for any error, omission or misstatement. A party must rely upon its own inspection(s). Powered by [www.Propertybox.io](http://www.Propertybox.io)



EPC Rating: B  
Council Tax Band: D

Whilst every care has been taken to prepare these particulars, they are for guidance purposes only. All measurements are approximate and whilst every care has been taken to ensure their accuracy, they should not be relied upon and potential buyers/tenants are advised to recheck the measurements. The agent has not tested any equipment, services, fixtures or fittings and makes no representation regarding their condition.

**CONTACT**

128 The Roman Way, West Denton,  
Newcastle upon Tyne, NE5 5AD

E:  
[westdenton@goodfellowsestateagents.com](mailto:westdenton@goodfellowsestateagents.com)  
T: 0191 2677500

